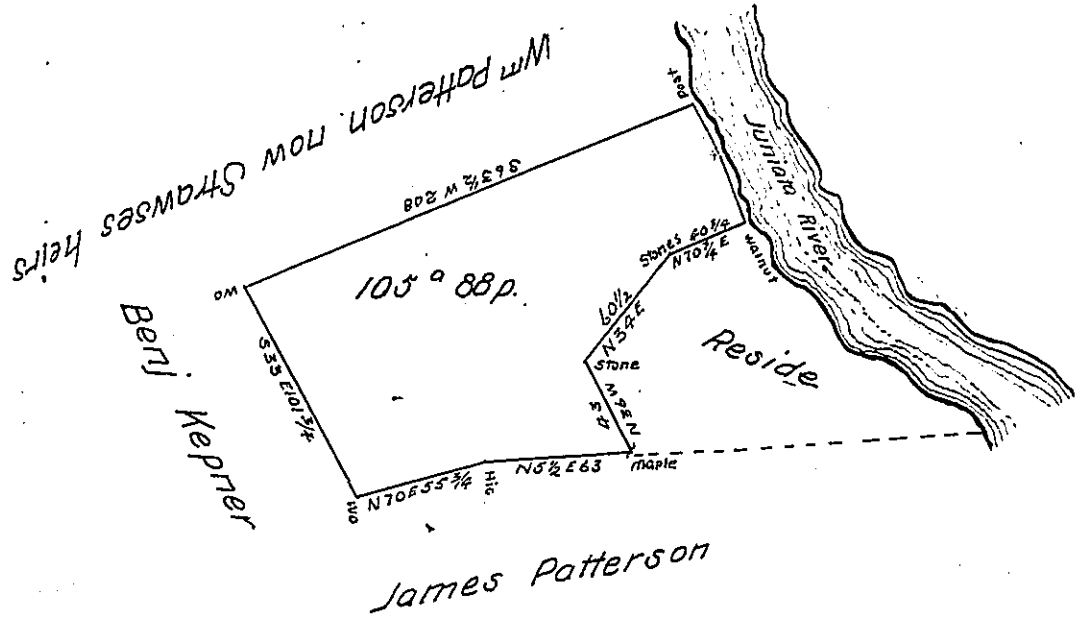


Courses and Distances from
 Walnut up Juniata to post
 N 29 W 40
 N 32 W 22 1/4 Post



One hundred and five acres and 88 perches of land with 6 p^r Cent
 situate in Melford township Mifflin County it being part of tract surveyed
 the 23^d Nov^r 1764 in pursuance of a warrant to Alexander Denniston dated 5th
 Feb^r 1755 and said to contain 206 acres with 6 p^r Cent The above part ap-
 pears to have been surveyed P^r M. M. Monahan Esq. late D. S. Examined 11th
 Ap^r 1821 and appears correct

Jacob Spangler Esq

Jno. H. Stewart D. S.

S. G. of Penn^a

IN TESTIMONY that the above is a copy of the original remaining on file in
 the Department of Internal Affairs of Pennsylvania, made
 conformably to an Act of Assembly approved the 16th day of
 February, 1833, I have hereunto set my Hand and caused
 the Seal of said Department to be affixed at Harrisburg,
 this first day of August 1904

Joseph P. Pearson
 Secretary of Internal Affairs.